

Welcome to the smiling world of SOREDEX™

**CRANEX™
3D**

**New dynamics for
your practice**



Benefits at a glance

Dynamic

- Top performance with versatile range of imaging programs
- Excellent image quality for accurate diagnostics
- RealPAN™ panoramic sensor
- Sensitive CMOS sensor with wide dynamic range
- Optimized workflow

Direct

- ClearTouch™ control panel
- SOREDEX familiar patient positioning system
- AES - Automatic exposure settings
- PickPoint™ and EasyScout™ for free FOV positioning
- Small footprint save office space

Durable

- Robust system designed for intensive use
- Upgradeability bring added value in the long run
- Long service life
- Soredex technical and clinical support network



Boost your practice performance

CRANEX™ 3D is a high quality dental imaging system with panoramic, optional cephalometric and Cone Beam 3D imaging programs. Its versatility offers dental clinics one of the most dynamic imaging systems.

CRANEX™ 3D combines ease of use and top performance for demanding dental clinics. Designed for people, CRANEX™ 3D combines imaging with safe performance and reliability, and helps you concentrate on what really matters — your patient.



Panoramic imaging

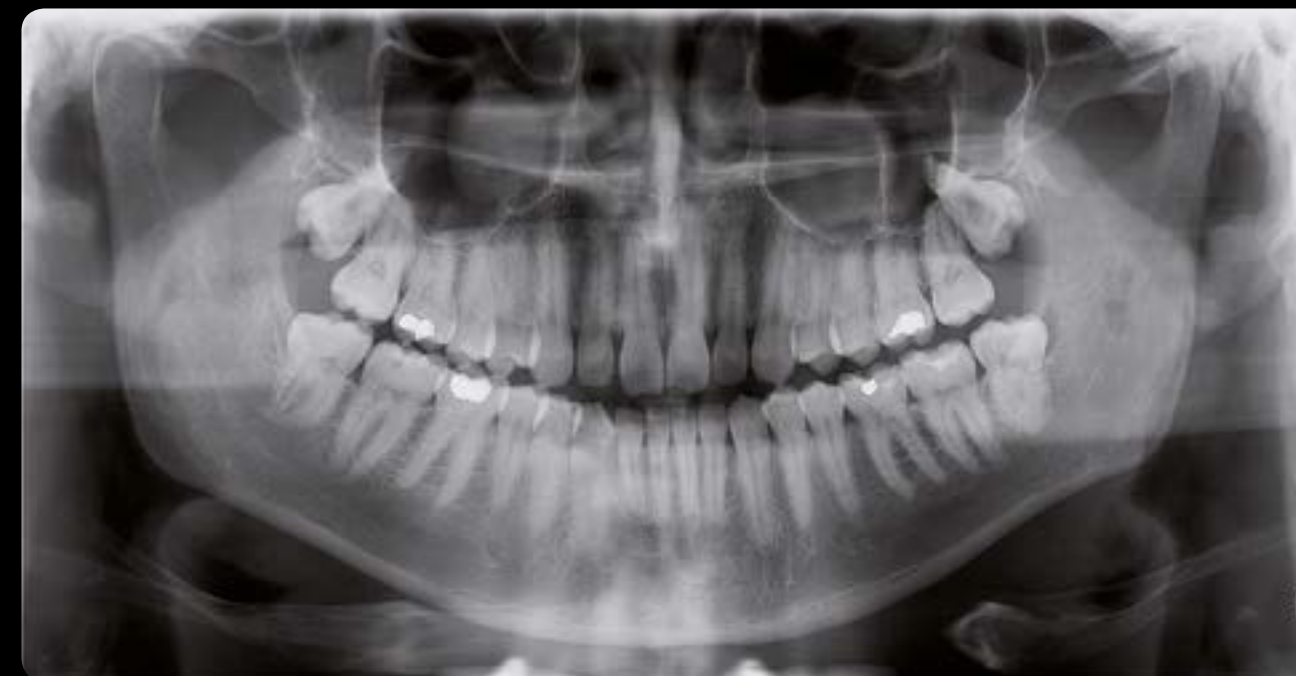
CRANEX™ 3D has RealPAN™, a dedicated panoramic CMOS sensor enabling full panoramic image size and accuracy in each panoramic program. RealPAN™ utilizes accurate and correct motion paths during its automatic operation.

This all can be seen as a perfect and clear image.

These features further enhance easy workflow:

- ClearTouch™ control panel located conveniently in the unit column
- AES* Automatic Exposure Settings
- Stable 5-point head support
- Clear laser lights for accurate positioning

*AES - CRANEX™ 3D has a unique AES function that provides automatic exposure settings based on patient size (Soredex patented technology).



Adult panoramic



Child panoramic



Bitewing program



Partial panoramic



TMJ open and closed mouth examinations





Cephalometric imaging

Orthodontic treatment sets high standards for panoramic and cephalometric imaging. At the same time, children's sensitivity to radiation needs to be considered. CRANEX™ 3D provides you with top performance and excellent image quality for orthodontic treatment planning and follow-up.

- Dose-controlled, automatic soft tissue adjustment provides full visibility of hard and soft tissue tracing points
- AES – Automatic exposure values
- Stable head support, exact geometry and lateral image calibration in each image
- Frankfurt Horizontal light in cephalostat helps positioning
- Fast lateral scanning
- Superior image processing



Full Width Lateral Program



Posterior Anterior Program



Reduced Width Lateral Program



Carpus Program
(Not available in US and Canada)

Carpus Program requires a carpus holder (separate option)

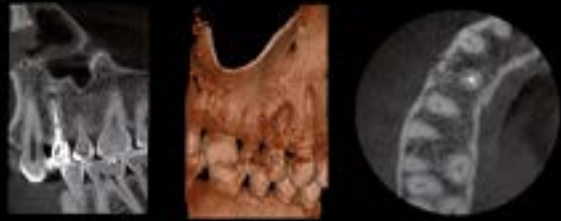
CBCT imaging can help to provide essential information for orthodontic treatment and diagnostics. The effect of dental deformities on a treatment plan may be difficult to estimate with 2D images, and a CBCT scan may be needed.

Most common CBCT applications in orthodontics:

- Impacted teeth, resorption related to impacted teeth position and localization
- Condition of TMJ
- Measuring bone dimensions for mini-implant placements
- Cleft palate assessment

CRANEX™ 3D grows to meet your clinical needs
- Easy upgrade path is ready, when your diagnostic needs expand.

XS FOV 6×4 ENDO



XS FOV 6×4 TMJ



Midi FOV 6×8 SINUS



3D imaging

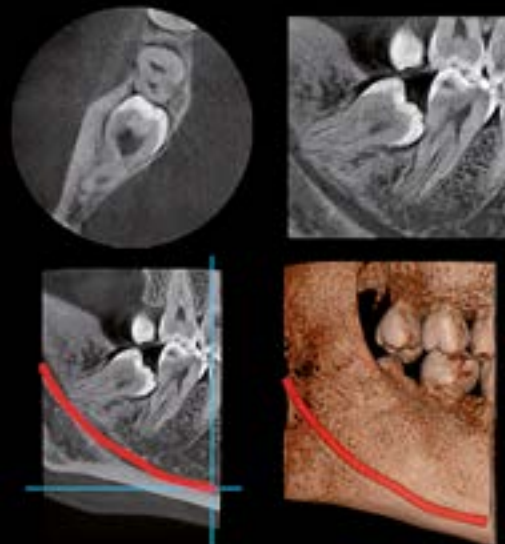
CRANEX™ 3D provides dental clinics with excellent capabilities for accurate diagnostics, treatment planning and preparation of small surgeries. 3D imaging enables clinicians to see detailed anatomical structures in the finest detail from desired angles.

With two selectable fields of view and four resolution selections, CRANEX™ 3D combines diagnostic accuracy, fast imaging and low dose.

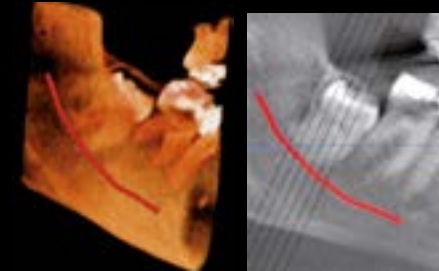
CRANEX™ 3D imaging application areas are:

- Implant planning
- Endodontics
- Dental and bone fractures
- Impacted teeth
- Wisdom teeth - 3rd molars
- TMJ
- Maxilla sinus
- Abnormal anatomy
- Caries

XS FOV 6×4 WISDOM TOOTH



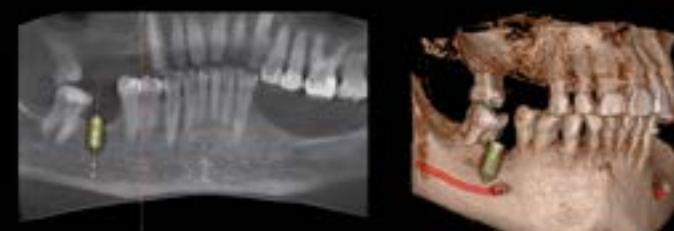
XS FOV 6×4 Minidose™



Midi FOV 6×8 Minidose™



Midi FOV 6×8 IMPLANT PLANNING



New Way of Viewing

SARA™

Soredex Advanced
Reconstruction Algorithm

SMAR™

Soredex Metal Artifact
Reduction

SARA™ - Soredex Advanced Reconstruction Algorithm visualizes small anatomical details like fractures and endodontic root fillings. (*)

SMAR™ - Soredex Metal Artifact Reduction reduces the effect of metals and other dense radiopaque objects on the 3D image which create artifacts that are typically seen as stripes and shadows. (*)

* SARA™ and SMAR™ are based on Reconstruction Algorithm Technology of Soredex

CRANEX™ 3D has a specific CBCT program designed for endodontic treatment, with 6 x 4 FOV size, 85 µm voxel size and SMAR enabling diagnostics of root and root canal morphology and fractures.





Minidose™

The SOREDEX™ Minidose™ (MDS) is a 3D imaging program with low radiation doses and good image quality thanks to SARA™ technology

The SOREDEX™ Minidose™ solution (MDS) helps with diagnostic imaging when dose sensitivity is critical.

The Minidose™ can be used also with follow-up imaging and screening due to very low level of patient dose.

The Minidose™ application areas are e.g. implant planning and control, children, wisdom teeth, location of impacted teeth, general follow-up and nose bone fractures.

Minidose™ 6×4
1/5 Panoramic
image

*Dose study, Ludlow 2014

Panoramic imaging

Sensor type	CMOS
Detector pixel size	100 µm
Resolution	spatial 6.5 lp/mm, image 5 lp/mm

Imaging programs

Adult panoramic, child panoramic, bitewing, sectional, TMJ lateral, TMJ/PA and sinus
--

Cephalometric imaging

Sensor type	CMOS
Detector pixel size	100 µm
Resolution	spatial 6.5 lp/mm, image 4 lp/mm

Imaging programs

Full width and child lateral, PAIAP and carpus projection (* (* Not available in US
--

3D imaging

Sensor type	CMOS Flat Panel
Projections	234 - 1260 slices
Voxel resolutions (µm)	85, 130, 200,290, 300,330
XS FOV (height x diameter)	61 x 41 mm
High resolution scan time exp/scan	6.1 s/10 s
Standard resolution scan time exp/scan	2.3 s/10 s
Minidose™™	1.2/10 s
Midi FOV (height x diameter)	61 x 78 mm
High resolution scan time exp/scan	12.6/20 s
Standard resolution scan time exp/scan	4.9/20 s
Minidose™™	2.3/10 s

Configuration options

Panoramic	
Panoramic + Ceph (left/right)	
Panoramic + 3D	Midi FOV optional
Panoramic + 3D + Ceph (left/right)	Midi FOV optional
File format	16 bit PNG
PAN	2-4 MB
Ceph	3-5 MB
3D	7.4-300 MB

X-ray generator

Generator	High frequency DC generator
Focal spot	0.5mm
Minimum total filtration	3.2 mm Al
Anode voltage	57-90 kV
Anode current	4-16 mA

General

Weight	200 kg (440 lbs)
Weight with Ceph	250 kg (551 lbs)
Dimensions (HxWxD)	2414 x 965 x 1405 mm
Dimensions with Ceph	2414 x 1995 x 1405 mm

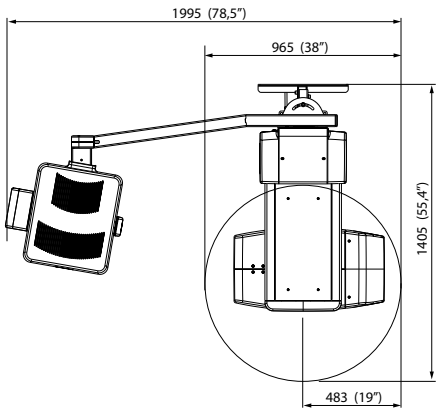
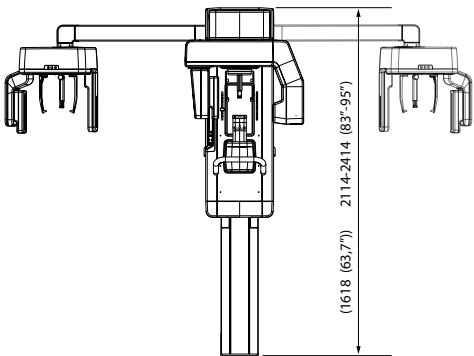
Power requirements

Line voltage	220-240V / 100-120V (50/60Hz)
Warranty	2 years

Workstation PC requirements*

Operating system	Windows 8/8.1, Windows 7, Windows Vista
	* For full details on supported PC requirements, please contact your local distributor for the latest information.

Technical
data



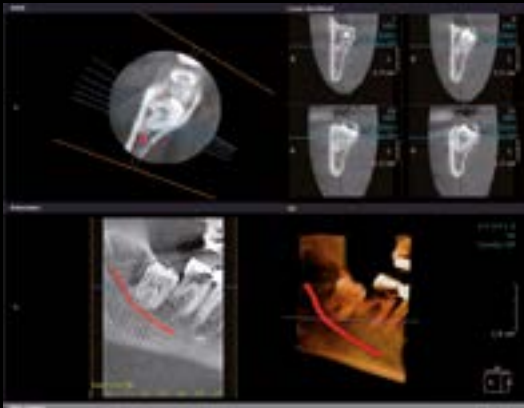
SCANORA™ SW with 3D viewing and diagnostic software offers a comprehensive set of imaging tools to assist you with your daily imaging needs. Flexible software options include standard single-user and optional network multi-user versions.

Optional DICOM services integrate CRANEX™ 3D seamlessly into a PACS/DICOM environment. SOREDEX™ TWAIN connects CRANEX™ 3D with 3rd party software supporting the TWAIN standard.

In addition to SOREDEX™ software, CRANEX™ 3D can be integrated with many practice management and 3rd party imaging software.

CRANEX™ 3D has a simple-to-use Ethernet connection to your PC or network environment.

Minidose™ 6×8



Welcome to the smiling world of SOREDEX™

Head office and factory:

Soredex

Nahkelantie 160, Tuusula
FI-04300 Tuusula
Finland
Tel. +358 10 270 2000
Fax +358 9 701 5263
info@soredex.com

Soredex

11727 Fruehauf Drive
Charlotte, NC 28273
U.S.A
Tel. 800-558-6120
Fax. 877-292-6050
Email: KKG.Imaging.CS@kavokerrgroup.com

Soredex Germany

Schutterstrasse 12
77746 Schutterwald
Germany
Tel: +49 (0) 781 28 41 98-0
Fax: +49 (0) 781 28 41 98-30
kontakt@soredex.de

**CRANEX™
3D**

Digital imaging
made easy™

Soredex designs, manufactures and markets easy to use and innovative imaging solutions for dental and maxillofacial professionals. SOREDEX™ portfolio covers wide range of applications from intraoral, panoramic, cephalometric extending to large field-of-view cone beam CT for demanding ENT and CMF diagnostics. Close co-operation with imaging professionals give us deep insight of how to incorporate true diagnostic value to clinical work.

Our products are known for reliability, simplified workflow and excellent image quality. We are committed to fulfill these promises today and in the future.

SOREDEX™/CRANEX™/SCANORA™/EasyScout™/ClearTouch™/RealPAN™/PickPoint™/Minidose™/SARA™/SMAR™/ Digital imaging made easy™ is registered trademark or trademark of Soredex in the United States and/or other countries. Other product names and trademarks are the property of their respective owners. CE-marked, NB (CE) number 0537. Electrical safety meets the IEC 60601-1 standard. Manufacturing complies with ISO 13485:2003, ISO 9001:2008 and ISO 14001:2004.

Soredex reserves the right to make changes in specifications and features shown herein at any time without notice or obligation. Contact your Soredex representative for the most up-to-date information.

© 2015 Soredex

www.soredex.com • www.soredex.de • www.soredex.com/usa

206180-7 10/15 Printed in Finland

 **SOREDEX**